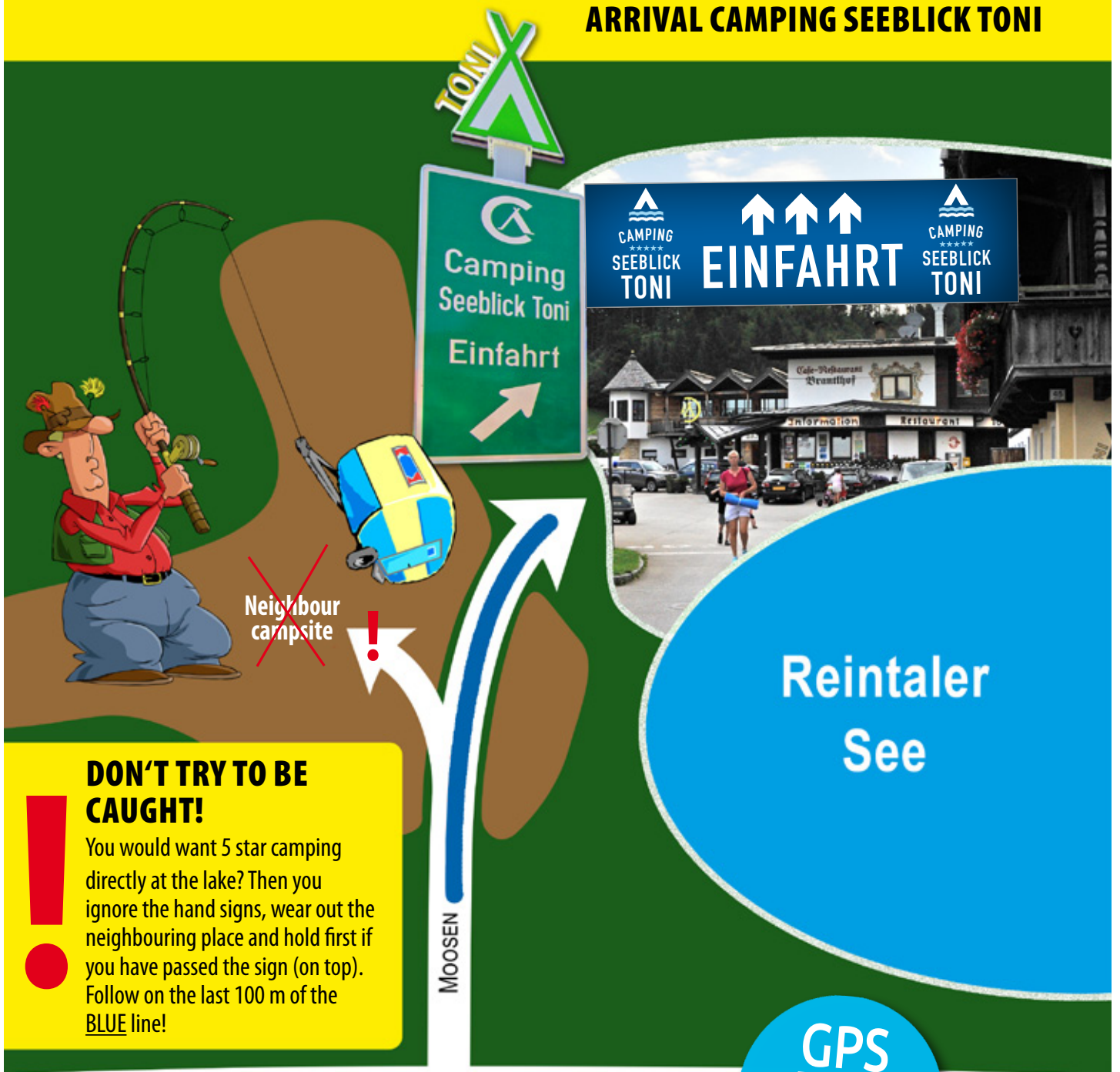


# ARRIVAL CAMPING SEEBLICK TONI



## DON'T TRY TO BE CAUGHT!

You would want 5 star camping directly at the lake? Then you ignore the hand signs, wear out the neighbouring place and hold first if you have passed the sign (on top). Follow on the last 100 m of the BLUE line!

GPS

L: N47°27'40"  
B: E11°54'24"

